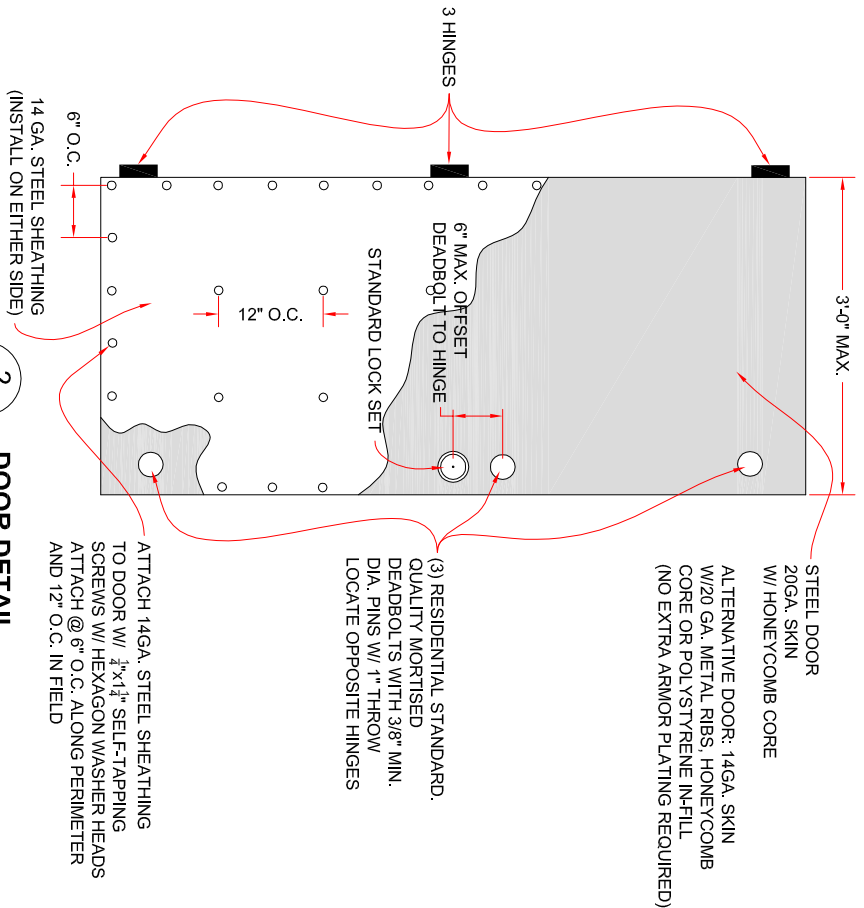
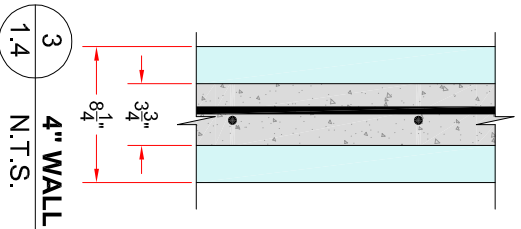


1 FLOOR PLAN
1.4 N.T.S.

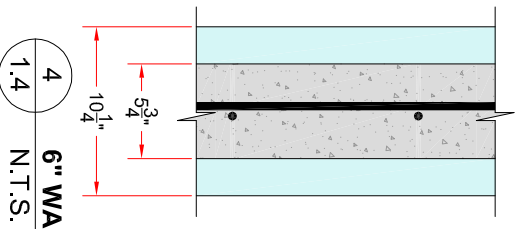


2 DOOR DETAIL
1.4 N.T.S.

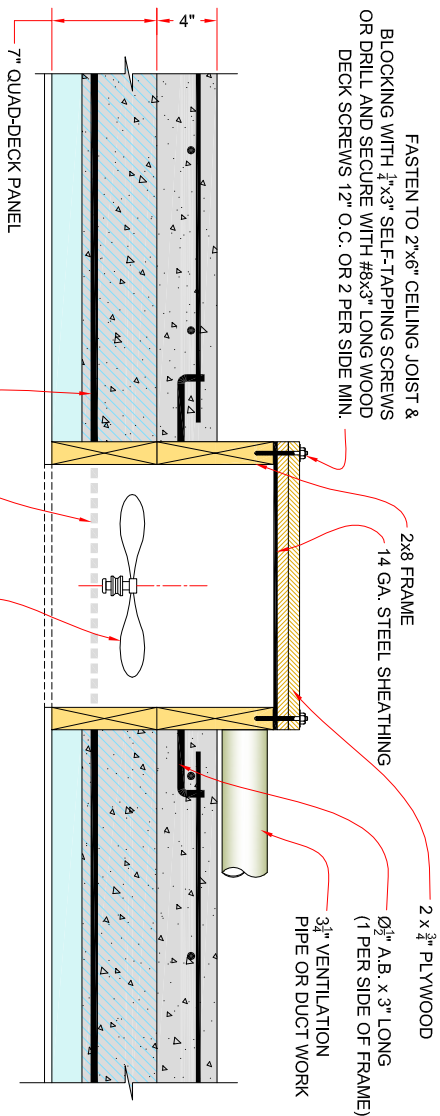
TEE ANCHORAGE 4 PER JAMB
16 GA. METAL DOOR FRAME
CONCRETE HEADER ABOVE DOOR W/ 2-#4 HORIZONTAL BARS
2-#4 N.T.S.
MAX. DOOR SIZE 3'-0" (DOOR MAY SWING IN OR OUT) 2ND DOOR MAY BE ADDED ON OPPOSITE WALL



3 4\"/>



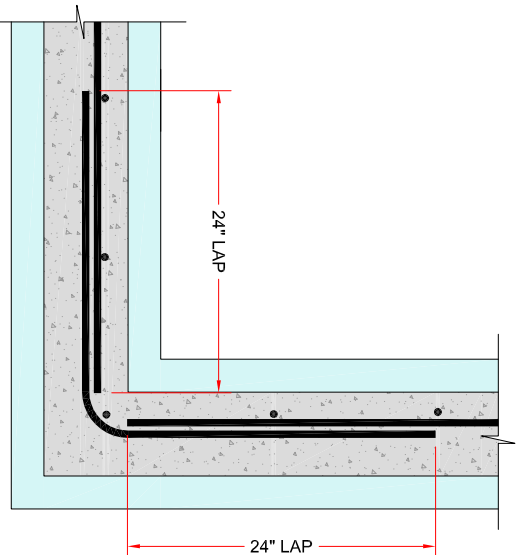
4 6\"/>



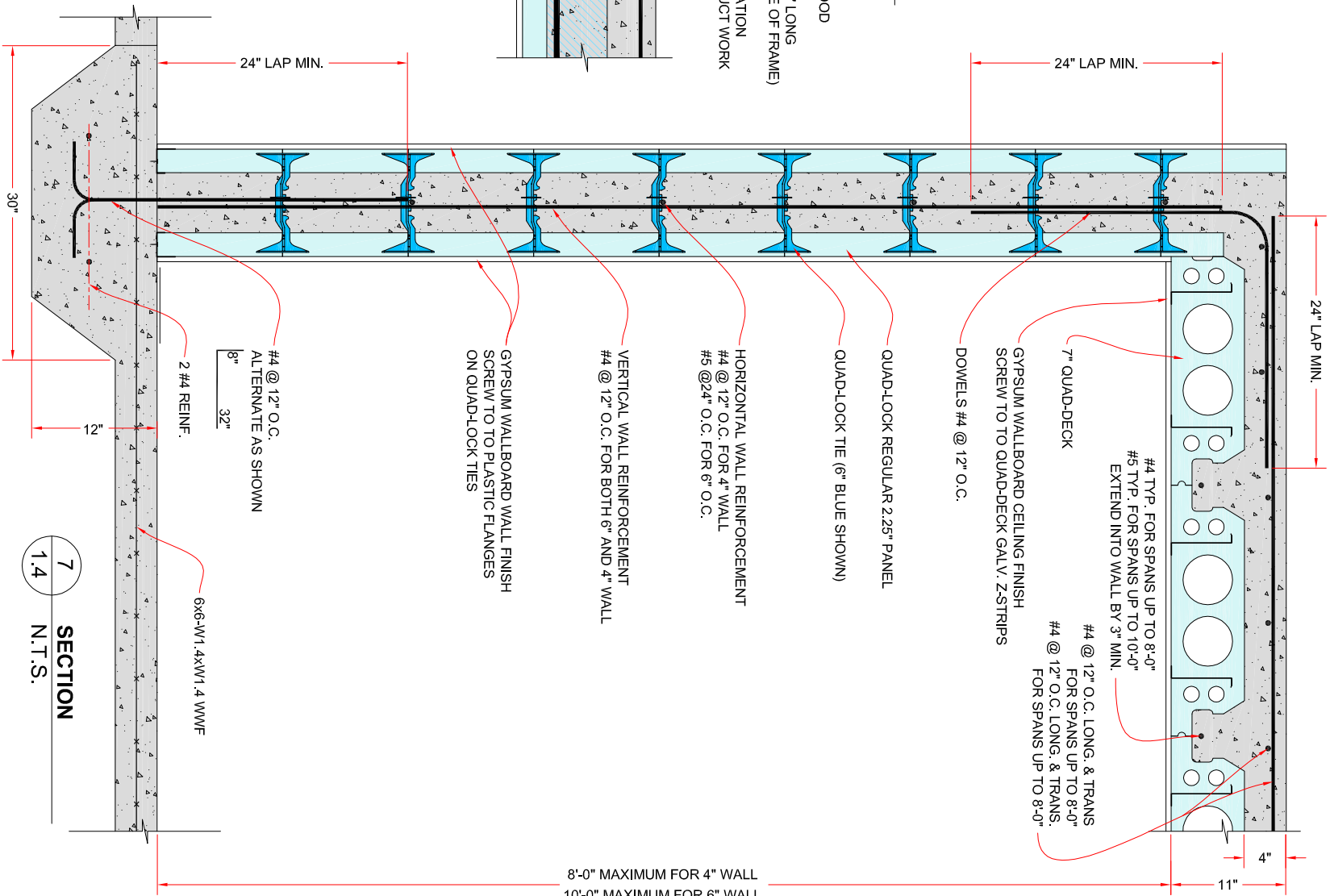
5 HVAC/ EXHAUST-VENTILATION DETAIL
1.4 N.T.S.

FASTEN TO 2"x6" CEILING JOIST & BLOCKING WITH 1/2"x3" SELF-TAPPING SCREWS OR DRILL AND SECURE WITH #8x3" LONG WOOD DECK SCREWS 12" O.C. OR 2 PER SIDE MIN.

EXHAUST FAN OR DUCTWORK INDICATES NORMAL EXHAUST VENTILATION OF BATHROOM OR HVAC DUCTWORK TO A ROOM. THE SHELTER DESIGN DOES NOT RELY ON THIS VENTILATION TO ENSURE OCCUPANT SAFETY.



6 CORNER DETAIL
1.4 N.T.S.



7 SECTION
1.4 N.T.S.

8'-0" MAXIMUM FOR 4" WALL
10'-0" MAXIMUM FOR 6" WALL

QUAD-LOCK
Building Systems Ltd.
888.711.5625 • Toll Free
7388 - 132nd Street
Surrey, BC V3W 4M7
Canada
604.590.3111
604.590.8412 • fax
www.quadlock.com

Quad-lock Building Systems Ltd.
IT IS THE RESPONSIBILITY OF THE USER TO COMPLY WITH ALL APPLICABLE REGULATIONS AND BUILDING CODE REQUIREMENTS CONCERNING THE USE OF THESE PRODUCTS.
IT IS FURTHER THE RESPONSIBILITY OF THE USER TO RESEARCH AND UNDERSTAND SAFE METHODS OF USE AND HANDLING OF THESE PRODUCTS.

FEMA COMPLIANT SHELTER DESIGN		FEMA SHELTER DESIGN	
DATE:	2008-08-07	SCALE:	NOT TO SCALE
REVISIONS:	R-02	PROJECT:	FEMA SHELTER DESIGN
DRAWN BY:	Z. PROSTRAN	CUSTOMER:	N/A
APPROVED BY:	H.M.K. & D.J.B.	DRAWING NO.:	QL-722