

QUAD-LOCK®



FAST-R

Solution for Tilt-Up Construction
Manufactured using Plastbau® Technology

FAST-R is designed to be the fastest method available for building an insulated concrete tilt-up structure.

FAST-R saves time, labor and money in the forming, tilt-up and finishing steps.

PLACE IT, POUR IT, TILT IT...

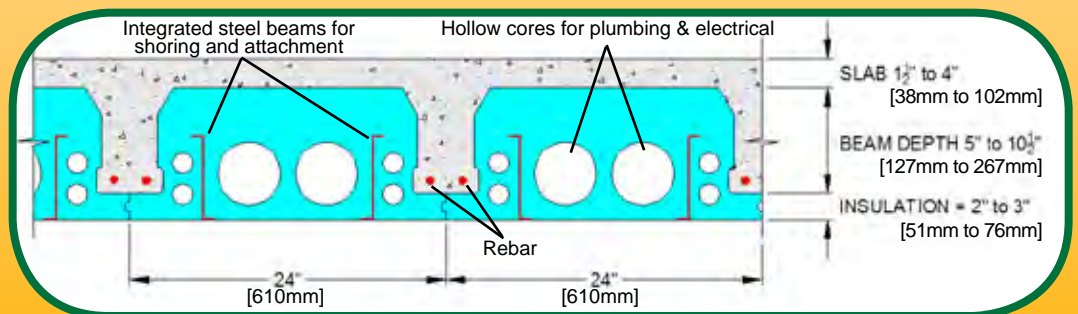
What is Quad-Lock's FAST-R Solution?



FAST-R is a lightweight form used to create panelized, reinforced concrete walls. The **FAST-R** forms stay in place to deliver an integrated, insulated wall system. Because it's lightweight it can be placed using only two people and it reduces the wall weight by replacing concrete with expanded polystyrene (EPS), producing a T-beam shape instead of the conventional flat slab. Each EPS panel is supported and reinforced with two integral steel beams molded into the product from end to end. The result is a self-supporting system that provides the maximum strength of a reinforced concrete wall with a minimum of materials and labor.



FAST-R uses patented Plastbau® Technology to create a reinforced concrete form. By using a continuous molding process, Quad-Lock is able to provide forms with continuous metal furring strips in whatever length required. The furring strips are perforated to ensure a superior bond with the EPS. Additionally, the forms contain two large service chases (or openings) for conduit or plumbing runs. Each project is pre-engineered and panels are delivered on-site labeled for efficient placement and assembly.



FAST-R Features and Benefits

FAST-R to Form...

- Edges interlock with a simple tongue and groove design
- Standard panels for all wall heights
- Larger panels can be designed yielding the same weight
- Pre-cut in production to exact length for each panel
- Form depths range from 7" (177mm) to 12.5" (318mm) to produce deep supporting ribs
- T-beam design reduces concrete by up to 40%*
- Up to 50% less reinforcing steel means less weight and lower costs *



FAST-R to Tilt...

- Self-supporting forms eliminate the need for a casting bed
- No bond breaker is needed; no sticking to slab surface
- Reduced panel weight enables single-plane face lift
- Reduced concrete weight allows for smaller cranes and bracing
- Panels can be placed hard side out or in, you decide

FAST-R Return on Investment...

- Multiple subs can be eliminated, for example, interior furring, chasing, moisture barrier and insulation; exterior architectural finishes and trim can be completed before the lift
- Lower operating costs – energy savings of up to 50%**
- Utilities can be placed in wall chases before the pour
- Panels can be stack-cast on confined sites
- Panels can be pre-cast off-site and trucked to site



* Compared to conventional 7¼" Tilt-Up

** Compared to non-insulated tilt-up walls

Concrete wall design requires the use of a licensed professional engineer. Quad-Lock's FAST-R solution is manufactured using Plastbau® Technology.

PLACE IT, POUR IT, TILT IT...

Horizontal Applications...

QUAD-DECK

Joist and Deck Forming System for Floors or Roofs

Branded as Quad-Deck, this product can be used for suspended floors and low-pitched roofs for a complete, insulated concrete structure.

Ideal for use in both commercial and residential construction, Quad-Deck combines the strength, security and reliability of concrete with the energy efficiency, design flexibility and comfort of insulating concrete forms.

See Quad-Lock's Quad-Deck literature for further information.



QUAD-LOCK

Insulating
Concrete
Form
Association

ISO 9001:2000
Certified Company

GREENSPEC®



888.711.5625
604.590.3111

7398 - 132nd Street
Surrey, BC Canada V3W 4M7

www.quadlock.com
www.quaddeck.com